

SCHOOL GRADE

Coming in
2018

Teacher Evaluation data not available because implementation of Ohio Teacher Evaluation System not required for this district in 2014-2015 school year.



Achievement

This grade combines two results for students who took the state tests. The first result answers the question – How many students passed the state test? The second result answers the question – How well did students do on the state test?

Performance Index

66.3%.....

Indicators Met

16.0%.....

D

F

2015 Modified Achievement Measure

COMPLEMENT GRADE
Coming in
2016



Progress

This is your school's average progress for its students in math and reading, grades 4-8. It looks at how much each student learns in a year. Did the students get a year's worth of growth? Did they get more? Did they get less?

Value Added

Overall.....

Gifted.....

Students with Disabilities.....

Lowest 20% in Achievement.....

F

NR

D

D

COMPLEMENT GRADE
Coming in
2016



Gap Closing

This grade shows how well all students are doing in your district in reading, math, and graduation. It answers the question – Is every student succeeding, regardless of income, race, ethnicity, or disability?

Annual Measurable Objectives

7.1%.....

F

2015 AMO Download File

COMPLEMENT GRADE
Coming in
2016



Graduation Rate

This grade answers the question – How many ninth graders graduate in four years or five years?

Graduation Rates

This school is not evaluated for graduation rate because there are not enough students in the graduating class.

COMPLEMENT GRADE
Coming in
2016



K-3 Literacy

This grade answers the question – Are more students learning to read in kindergarten through third grade?

K-3 Literacy Improvement

28.6%.....

F

COMPLEMENT GRADE
Coming in
2016



Prepared for Success

This grade answers the question – Are students who graduate from your district ready for college or a career? There are many ways to show that graduates are prepared.

COMPLEMENT GRADE
Coming in
2016

Indicators Met

Indicators Met measures the percent of students who have passed state tests. It also includes the gifted indicator. Test results are reported for each student in a grade and subject.

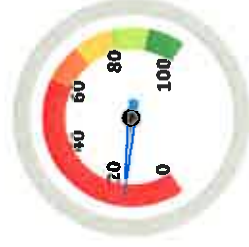
F

Indicators Met %

16.0%

4 out of 25

- A = 90.0 - 100.0%
- B = 80.0 - 89.9%
- C = 70.0 - 79.9%
- D = 50.0 - 69.9%
- F = 0.0 - 49.9%



Grades 3-5

3rd Grade	Mathematics	32.6%	X
	Reading	56.5%	X
	Mathematics	34.6%	X
4th Grade	Reading	67.3%	X
	Social Studies	56.9%	X
	Mathematics	54.3%	X
5th Grade	Reading	72.3%	✓
	Science	29.8%	X

Grades 6-8

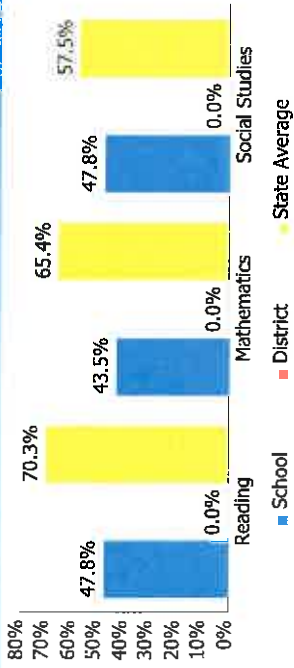
6th Grade	Mathematics	54.3%	X
	Reading	52.2%	X
	Social Studies	32.6%	X
7th Grade	Mathematics	56.5%	X
	Reading	57.4%	X
	Mathematics	46.3%	X
8th Grade	Reading	59.2%	X
	Science	34.7%	X

GIFTED INDICATOR NC

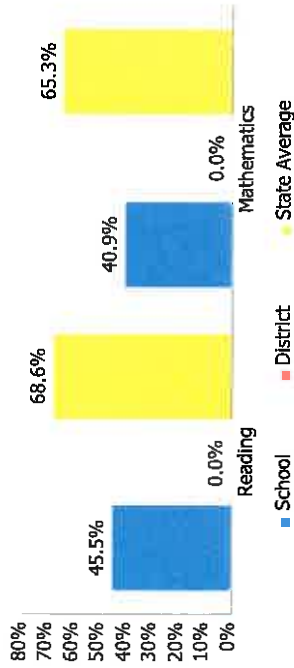
Ohio Graduation Test

OGT, 10th Graders	Mathematics	72.9%	X
	Reading	91.7%	✓
	Science	70.8%	X
	Social Studies	81.3%	✓
	Writing	85.4%	✓
OGT, 11th Graders	Mathematics	NC	NC
	Reading	NC	NC
	Science	NC	NC
	Social Studies	NC	NC
	Writing	NC	NC
HS	Algebra I	55.0%	X
	English I	61.1%	X
	English II	NC	NC
	Geometry	NC	NC
	Government	NC	NC
	History	63.3%	X
	Physical Science	43.6%	X

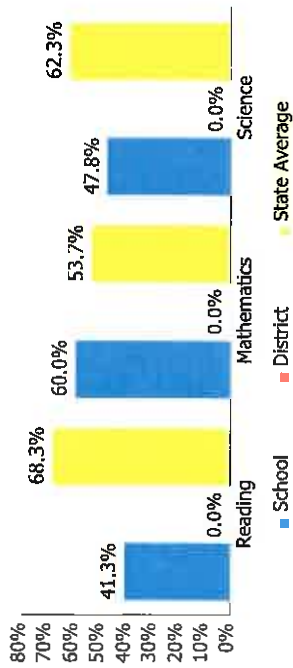
2014 - 2015 Report Card for Horizon Science Academy Lorain



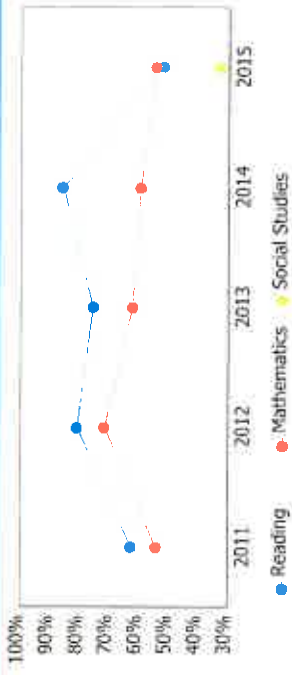
7th Grade



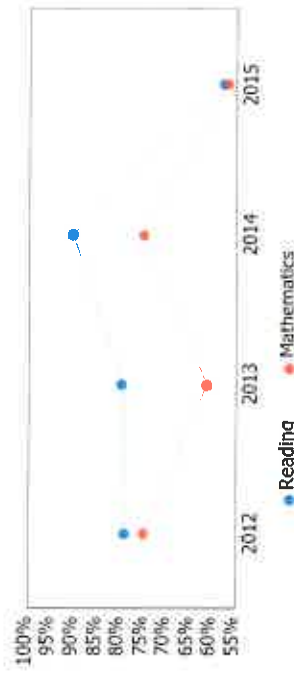
8th Grade



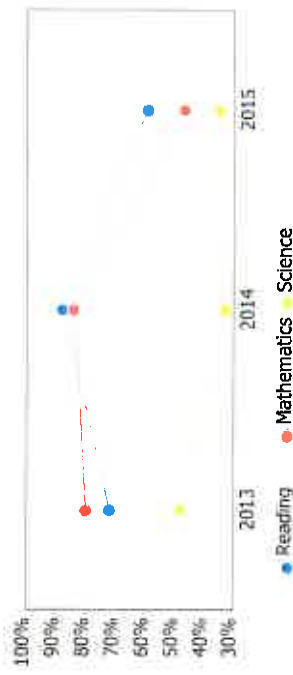
10th Grade OGT



7th Grade



8th Grade



10th Grade OGT

Gifted Students



The Gifted Students data and Indicator highlight the opportunities for and performance of gifted students. The dashboard answers several questions: How many students are identified as gifted and in what categories? How many of those students are receiving gifted services? How well are those gifted students performing? The Gifted Indicator measures whether opportunity and performance expectations are being met for gifted students.

INDICATOR

NC

Overview

The Gifted Indicator is derived from three components: Gifted Value Added grade, the Performance Index for gifted students, and a Gifted Inputs score.

Gifted Value Added

Value Added Grade: NR Schools must earn a Gifted Value Added grade of C or better to meet the Gifted Value Added component.

Value Added Met?: NC

Gifted Performance Index

Performance Index: 0.000 Schools with at least 10 unique students in the Gifted Performance Index calculation must score 115.0 or better to meet the Gifted Performance Index component.

Performance Index Met?: NC

Gifted Inputs

Total Points: 0.0 Points are earned based on identification and services provided to gifted students. Schools must earn 40 or more points out of a possible 100 to meet the Gifted Inputs component.

Gifted Inputs Met?: Not Met

Gifted Indicator Final Result

The Gifted Indicator is Met if none of the three components are Not Met. Gifted Inputs alone cannot determine the Gifted Indicator, however; if both the Value Added and Performance Index components are NC, then the Gifted Indicator is also NC.

INDICATOR

NC

Performance Index

The Performance Index calculation for gifted students. Only tests taken by students identified as gifted in that subject (e.g. gifted in Math and taking the Math test), or taken by students identified with Super Cognitive abilities regardless of test subject are included.

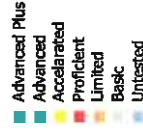


0.000%

0.000 of a possible 120.0

A = 90.0 - 100.0%
 B = 80.0 - 89.9%
 C = 70.0 - 79.9%
 D = 50.0 - 69.9%
 F = 0.0 - 49.9%

Achievement Level	Pct of Students	Points for this Level	Points Received
Advanced Plus	0.0	1.3	0.0
Advanced	0.0	1.2	0.0
Accelerated	0.0	1.1	0.0
Proficient	0.0	1.0	0.0
Basic	0.0	0.6	0.0
Limited	0.0	0.3	0.0
Untested	0.0	0.0	0.0
			0.000



Progress



This is your school's average progress for its students in math and reading, grades 4-8. It looks at how much each student learns in a year. It answers the question - Did the students get a year's worth of growth? Did they get more? Did they get less?

COMPONENT GRADE

Coming in
2016

GRADE

F

Overall

This measures the progress for all students in math and reading, grades 4-8.

GRADE

NR

Gifted Students

This measures the progress for students identified as gifted in reading, math, and/or superior cognitive ability.

GRADE

D

Students in the Lowest 20% in Achievement

This measures the progress for students identified as the lowest 20% statewide in reading and math achievement.

GRADE

D

Students with Disabilities

This measures the progress for students with disabilities.

GRADE

Coming
in
2018

High School

A High School measure of progress will be reported in the 2014-15 school year.

Progress Details

This table shows the Progress scores by test grade and subject, and includes up to three years of data as available.

Test Grade	Progress Score		
	English Language Arts	Mathematics	All Tests
All Grades	-1.87	-2.82	-2.84
4th Grade	-3.16	-3.33	-3.33
5th Grade	2.17	-0.51	1.25
6th Grade	-3.78	-2.77	-4.14
7th Grade	-0.00	1.14	0.26
8th Grade	-2.57	-0.80	-2.48
High School	-0.03	-1.20	-0.96

Although Progress scores are not assigned letter grades at this level of detail, the grading scale applied at the Overall (All Students, All Tests) level is:

A = 2.00 and up
 B = 1.00 to 1.99
 C = -1.00 to 0.99
 D = -2.00 to -1.01
 F = below -2.00

Gap Closing



This grade shows how well all students are doing in your district in reading, math, and graduation. It answers the question – Is every student succeeding, regardless of income, race, ethnicity, or disability?

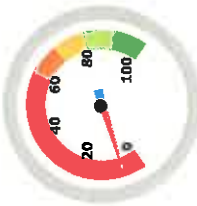
COMPONENT GRADE

Coming in
2016

GRADE

F

AMO Points



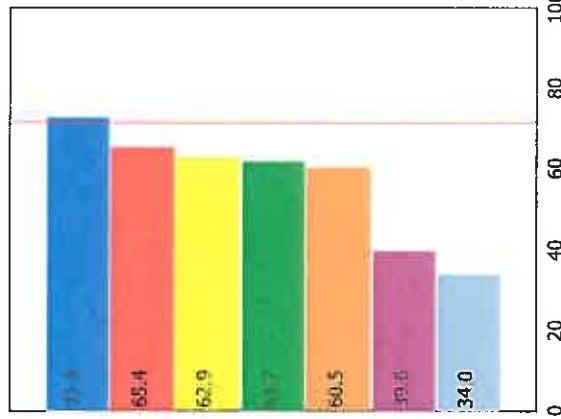
7.1%

A = 90.0 - 100.0%
 B = 80.0 - 89.9%
 C = 70.0 - 79.9%
 D = 60.0 - 69.9%
 F = 0.0 - 59.9%

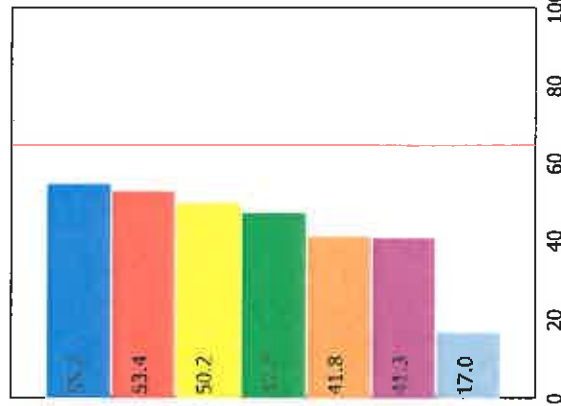
Annual Measurable Objectives

Annual Measurable Objectives (AMOs) compare the performance of student groups to a state goal which is displayed as the red line in the following charts. These charts show how well each group achieves that goal in reading, math and graduation – and emphasize any achievement gaps that exist between groups. The ultimate goal is for all groups to achieve at high levels.

Reading



Math



This school does not have an Annual Measurable Objective for Graduation Rate because there were not enough students to evaluate.

Graduation Rate

The red line on each graph identifies the Annual Measurable Objective. The 2015 AMO for Reading is 71.3%, for Math is 65.0%, and for Graduation Rate is 80.5%. Subgroups with fewer than 30 students are not rated and do not appear on the graphs.

The Graduation Rate graph that would appear in this space cannot be displayed because there were not enough students to evaluate.

Percentage On-Track in Reading Diagnostic



This chart shows the overall percentage of students that were on-track/not-on-track for each grade level reading diagnostic in 2014-2015.

Third Grade Reading Guarantee

Ohio's Third Grade Reading Guarantee ensures that students are successful in reading before moving on to fourth grade. Schools must provide supports for struggling readers in early grades. If a child appears to be falling behind in reading, the school will immediately start a Reading Improvement and Monitoring Plan. The program ensures that every struggling reader gets the support he or she needs to learn and achieve.

Students have multiple opportunities to meet promotion requirements including meeting a minimum promotion score on the third grade state reading tests given in the fall and spring. Students have an additional opportunity to take the state assessment in the summer, as well as a district-determined alternative assessment.

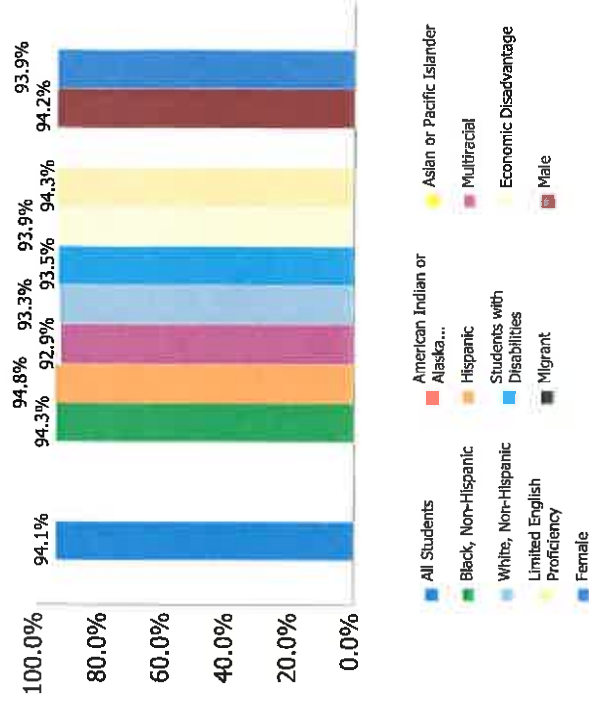
The Parent Roadmap is available to help parents understand how the Third Grade Reading Guarantee applies to your child.

How many third graders met the Third Grade Reading Guarantee requirements for promotion to 4th grade? **94.6%**

How many third graders scored proficient on the state Reading test? **56.5%**

Attendance Rate

Chronic Absenteeism Rate: 15.9%



NC = Not Calculated because there are fewer than 10 in the group

Attendance Rate is not shown if enrollment is less than 10.

Your School's Teachers

Number of Teachers by Program Area

Your School's Poverty Status: High	Your School	Your District	General Education	41.0
Percentage of teachers with at least a Bachelor's Degree	100.0	--	Gifted and Talented	0.0
Percentage of teachers with at least a Master's Degree	18.0	--	Career-Technical Programs	0.0
Percentage of core academic subject and elementary classes not taught by Highly Qualified Teachers	0	--	Art Education K-8	1.0
Percentage of core academic subject and elementary classes taught by properly certified teachers	100	--	Music Education K-8	0.0
Percentage of core academic subject elementary and secondary classes taught by teachers with temporary, conditional or long-term substitute certification/licensure	9.9	--	Physical Education K-8	2.0
Lead or Senior Teachers:	0.0	0.0	ELL Instructional Program	0.0
			Special Education	6.0

A district's high-poverty schools are those ranked in the top quartile based on the percentage of economically disadvantaged students. Low-poverty schools are those ranked in the bottom quartile based on the percentage of economically disadvantaged students. A district may have buildings in both quartiles, in just one quartile or in neither quartile.

NC = Not Calculated because there are fewer than 10 in the group

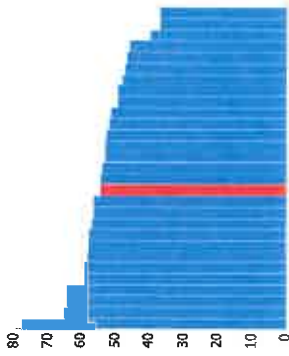
Financial Data



These measures answer several questions about spending and performance. How much is spent on Classroom instruction? How much, on average, is spent on each student? What is the source of the revenue? How do these measures compare to other districts and schools?

Comparison Group: Community Schools with Enrollment 500 or more

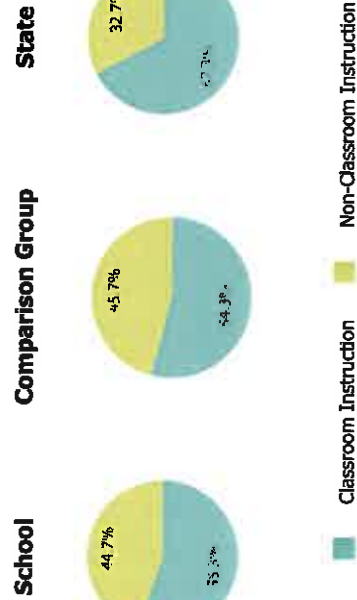
Classroom Spending Data



What percent of funds are spent on classroom instruction?
55.3%

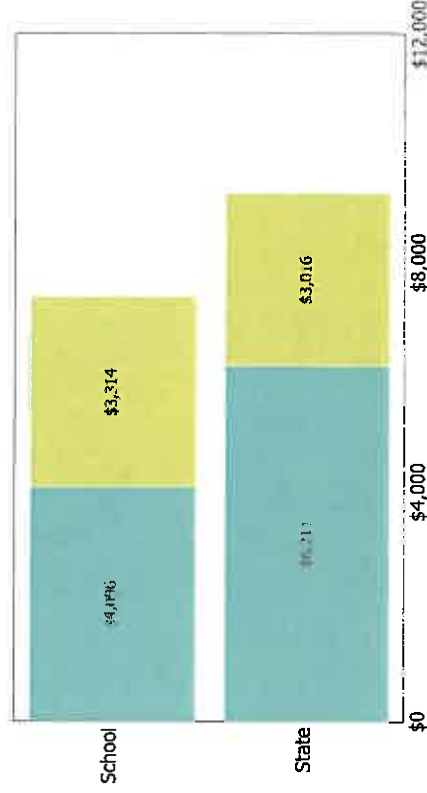
How does this school rank in comparison to other schools of similar size?
14 out of 32

A rank of 1 indicates the highest percent spent on classroom instruction.



Spending per Pupil Data

	School	State
Operating Spending per Pupil	\$7,410	\$9,228
Classroom Instruction	\$4,096	\$6,211
Non-Classroom Spending	\$3,314	\$3,016



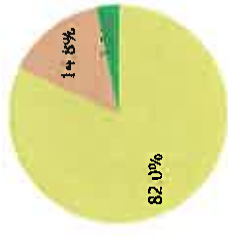
Horizon Science Academy Lorain IS NOT among the 20% of traditional community schools with the lowest operating expenditures per pupil.

Horizon Science Academy Lorain IS among the 20% of traditional community schools organizations with the highest academic performance index scores.

Source of Revenue

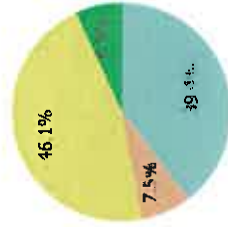
Source of Funds	School	State Total
Local	\$0	\$8,465,909,321 39.4%
State	\$4,371,248	\$9,920,347,064 46.1%
Federal	\$788,942	\$1,617,676,379 7.5%
Other Non-Tax	\$169,041	\$1,492,334,587 6.9%
Total	\$5,329,231	\$21,496,267,351 100.0%

School



Local State Federal Other Non-Tax

State



Local State Federal Other Non-Tax